

# ArcLight

Next-generation discovery and delivery for archives

---

Mark A. Matienzo / @anarchivist

Stanford University Libraries

ArchivesSpace Integrations Webinar Series, 05/12/2020

**<https://library.stanford.edu/projects/arclight>**

# Overview

- Project background
- Core features
- Integrations
- Why ArcLight?

# Description and objectives

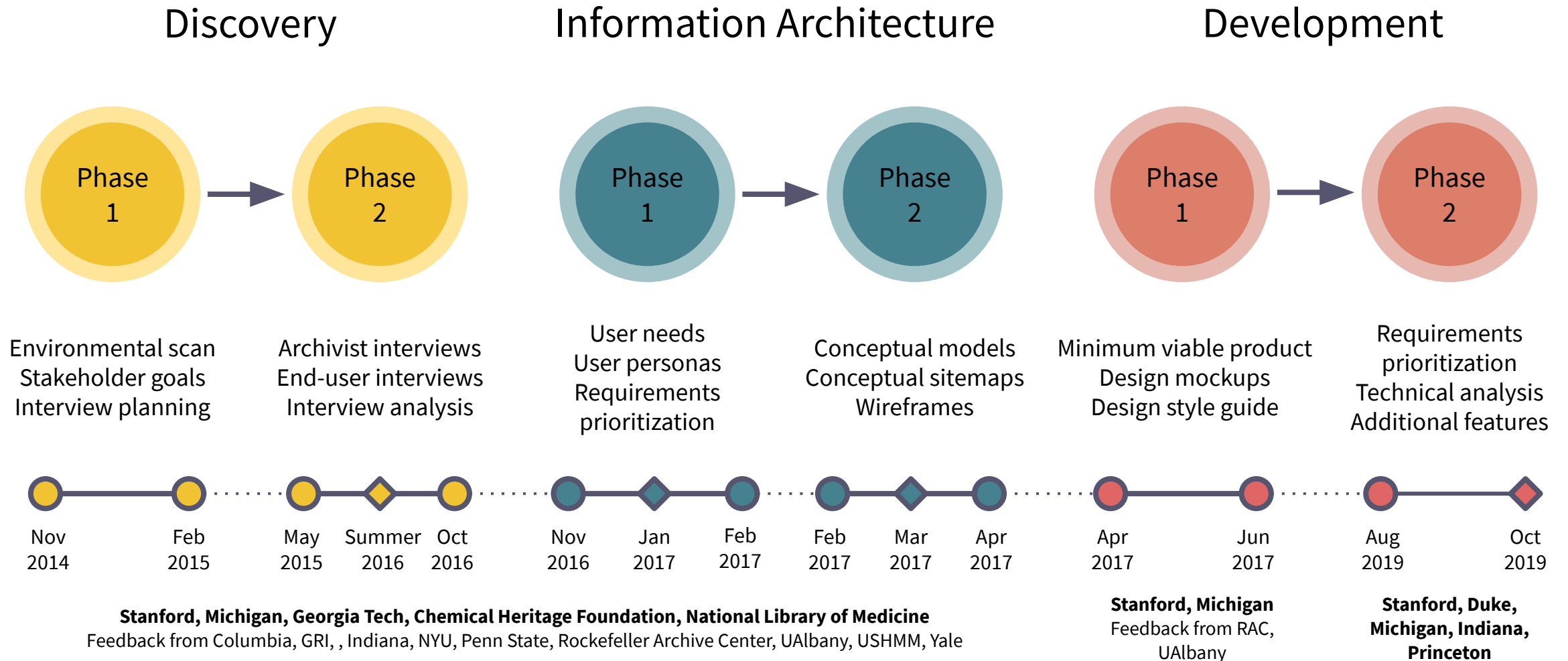
- Project initiated by Stanford Libraries ~5 years ago to address needs related to discovery/delivery of information in archives
- Support discovery of physical and digital collections
- Integrations between systems as a central priority
- Maintain a community focus throughout the project

# Design and development process

- Design process led by 2 Stanford UX designers
- Followed a model for **user-centered design** developed and refined over time\*
- Leveraged existing practices for community-based open source software development

\* See DLF 2014 presentation: <https://bit.ly/spotlight-dlf>

# Overview and timeline of work to date



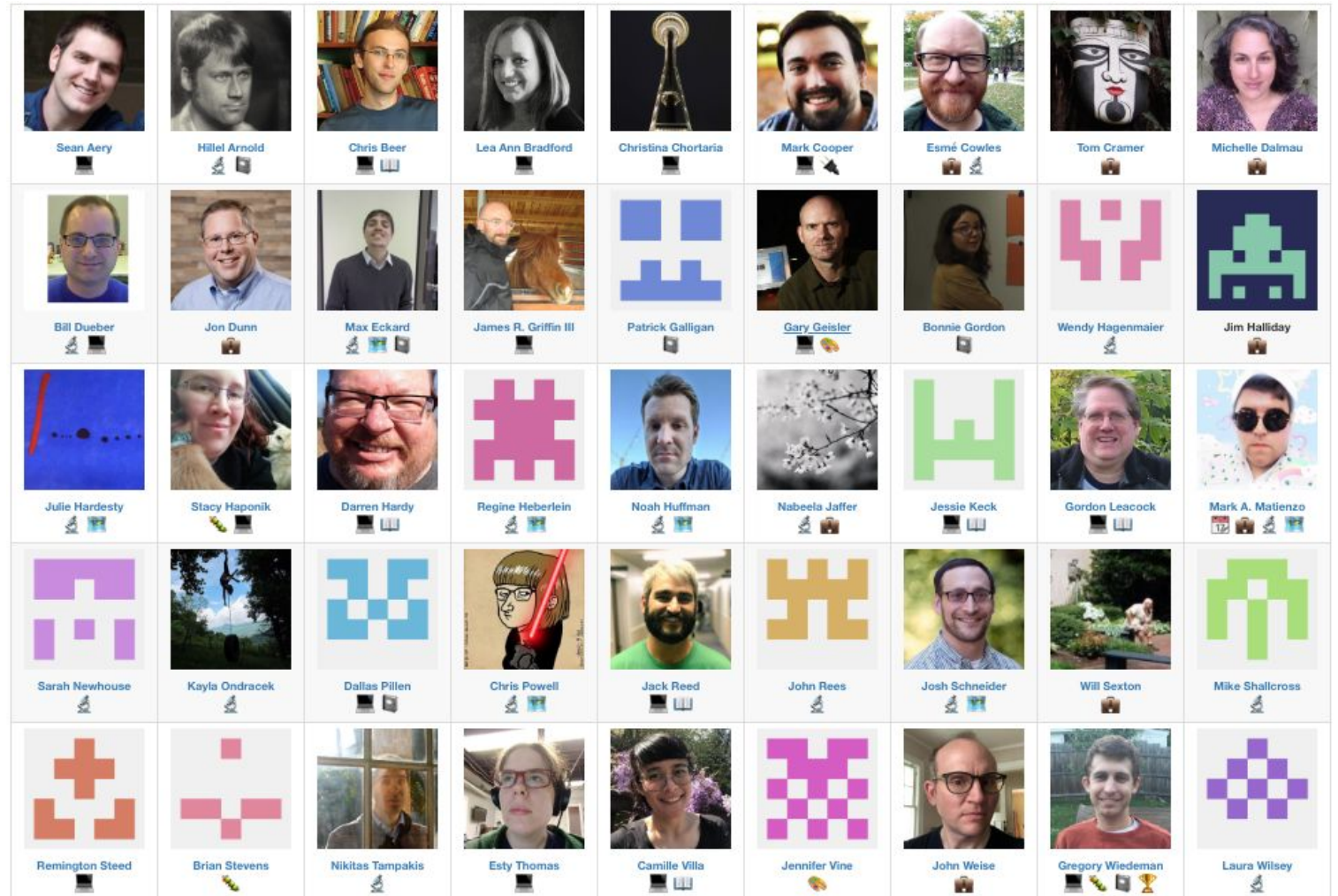
# Community process

- Intentional choice informed by Stanford's participation in open source communities
- Allows other institutions to participate by identifying needs and providing feedback
- Build interest and identify potential contributors to software development

# Contributors

## Institutional contributors

- University at Albany
- Duke University
- Georgia Tech
- Indiana University
- LYRASIS
- National Library of Medicine
- University of Michigan
- Princeton University
- Rockefeller Archive Center
- Stanford University



# Core features

- View archival description as trees and individual components
- Support for multiple repositories/departments
- Keyword and faceted search across and within collections
  - Contextual searching
  - Hit highlighting
  - Sorting results
- Accessibility: WCAG 2.0 AA conformance
- Customizable indexing of EAD, expandable to other data sources
- Request management integration (configurable; supports Aeon)
- Incorporates digital object presentation
  - Built-in support for oEmbed
  - PDF viewer sample code
  - Configurable/extensible

<https://arclight-demo.projectblacklight.org>



# Archival Collections at Institution



[Repositories](#) [Collections](#)

Search

# Archival Collections at Institution

[Repositories](#) [Collections](#)

Search	all collections ▾	All Fields ▾	Search... <input type="text"/>	Search 
--------	-------------------	--------------	--------------------------------	--

## Archival Collections at Institution

[Repositories](#) [Collections](#)

All Files

Search...

Search

Start Over

Back to Search

[Previous](#) (2 of 2) [Next](#)[Home](#) [Collections](#) [Stanford University Library in photograph album, circa 1910-1915](#) [Photograph Album](#)[Stanford University Libraries, Special Collections and University Archives](#)

Download

## Photograph Album

Download

[In person](#)

Download

[Online content](#)**BEFORE YOU VISIT:**

Special Collections and University Archives materials are closed offsite and must be requested in advance.

**LOCATION OF THIS COLLECTION**[Stanford University Libraries, Special Collections and University Archives](#)

Green Library  
307 Escalante Hall  
Stanford, CA 94305, USA

9501 7th Floor  
[specialcollections@stanford.edu](#)

## ABOUT THIS FILE

collection: [Box 1](#)

## COLLECTION CONTENT

[1. Photograph Album, circa 1910-1915](#)[2. Photograph Album, circa 1910-1915](#)[3. Photograph Album, circa 1910-1915](#)[4. Photograph Album, circa 1910-1915](#)[5. Photograph Album, circa 1910-1915](#)[6. Photograph Album, circa 1910-1915](#)[7. Photograph Album, circa 1910-1915](#)[8. Photograph Album, circa 1910-1915](#)[9. Photograph Album, circa 1910-1915](#)

# Archival Collections at Institution

[Repositories](#) [Collections](#)

Search

this collection



All Fields



Search...

Search

[Start Over](#)[Back to Search](#)[Home](#) [University of Michigan. Special Collections Research Center](#)

## Rosenberg Family Correspondence, 1938-2010, bulk 1938-1946

Collection ID: rosenberg

[Request](#) [Bookmark](#) [Download EAD](#)[Overview](#)[Contents](#)[Online content](#)[Access](#)

### SUMMARY

CREATOR: [Rosenberg, Alfred](#), [Rosenberg, Alise](#), [Rosenberg, Victor](#), [Rosenberg, Eugen](#), [Rosenberg, Julius](#), [Rosenberg, Johanna](#), [Rosenberg, Nathan](#), and [Rosenberg, Emmy](#)

ABSTRACT: The 105 letters in this collection document the experience of a German Jewish family in the years immediately before, during,

[Summary](#)[Background](#)

# Integration

- Long desired by ArcLight community, originating in design phase
  - ArchivesSpace and other archives management systems
  - Repositories/digital object presentation
  - Request management systems
- Strategic and technical considerations
  - Address “siloining” of different kinds of digital content
  - Reusing digital viewers across contexts
- **ArcLight by design is “loosely coupled”**; tighter couplings make most sense in context of an institution’s implementation

# Why ArcLight?

- Loose coupling
- Good for cases where you need to support multiple systems, or multiple instances of ArchivesSpace
- Builds on Blacklight in terms of both software and community
- Community of adopters
  - Live: University at Albany
  - In progress: Duke, Indiana, Michigan, Princeton, Stanford, Connecticut Archives Online, Empire Archival Discovery Cooperative

# Thank you!

---

Mark A. Matienzo / @anarchivist

For more information on ArcLight, visit

**<https://library.stanford.edu/projects/arclight>**